

# WGSDCA

Dog'sport Magazine

SUMMER 2021

WORKING GERMAN SHEPHERD AND DOGSPORT CLUBS OF AUSTRALASIA

# WGSDCA

## Editor

*from the desk*

KARYN WORTH

Welcome to the summer edition of Dogsport magazine and the start of 2021.

In this edition we update you on the operational functions and/or changes within WGSDCA and the ruling of the German Dusseldorf Court of Appeals regarding the SV Judge Ban introduced by the FCI/VDH in December 2019.

We also look in at how our clubs have been going during the last few months of 2020.

Let's hope this year we can continue to adapt to the new normal way of doing things as we prepare for our National Championship in June 2021.

Happy reading!

## *Dogsport: the preservation of the working dog.*

### *Mission Statement*

To maintain and improve the temperament and physical soundness of the German Shepherd Dog in Australasia.

To promote responsible dog ownership to our members.

### *Our Vision*

To be a progressive dogsport organisation in partnership with the international dogsport community.

## Contents

WGSDCA Editor	2
Annual Report	3
Special Update	6
New Changes as a Result of the 2020 WGSDCA Annual General Meeting	9
Club News: Brisbane Sporting Dog Club	10
Club News: Metro Dogsport Club	12
Club News: Norwest Dogsport Club	14
Club News: Sydney Dogsport Club	16
Interview with Dr Bernd Tellhelm	19
WGSDCA Helper Workshop & Certification	22

### SCOREBOOKS, SPORTS PASSES AND FORMS

When filling out the forms for your score books, sports passes, membership and in particular trial validation forms it would be appreciated if the forms could be typed rather than hand written, where possible, to ensure accurate records are kept and scorebooks and sportpasses reflect the correct information. Also when scanning please make sure the scans are of good quality in black and white.

Please ensure payment forms accompany all payments so the money can be allocated to the correct person and item eg. Smith – scorebook.

### INDIVIDUAL WGSDCA MEMBERSHIP

Whether your interest is breeding or training the German Shepherd Dog, or simply enjoying the company of people like you who love to spend time with their dogs, WGSDCA has something for you. Send us an email to learn more.

### MEMBERSHIP APPLICATION

You can join WGSDCA through one of our Club Affiliates or directly. We have five categories of Individual Membership of the WGSDCA:

- Individual Membership
- Dual Membership
- Youth Membership (free)
- Life member
- Social Membership

Members of WGSDCA have to renew their WGSDCA Individual Membership annually.

Send us an email for further information.

[secretary@wgsdca.org.au](mailto:secretary@wgsdca.org.au)

# Annual Report

## WGSDCA President, December 2020

Year 2020 brought disruption world-wide and my thoughts go out to all who faced hardship on so many levels as the world reacted to COVID-19.

**I**n the realm of the working dog, year 2020 should not be remembered for the many cancelled national and international events, but for the historic and extraordinary event that happened on 7 September 2020. That was the day where the German Dusseldorf Court of Appeals ruled that the 'SV Judge Ban' introduced by FCI/VDH in December 2019 was in breach of competition laws as its objective was to prevent non-FCI affiliated WUSV clubs from organising their own events. But perhaps more importantly, the Court also concluded that the core Articles [constitutions] of the FCI and VDH have the objective to restrict competition within the worldwide canine fraternity with respect to breeding and dog events. Consequently, the Court ruled the current FCI/VDH Rules & Regulations as null and void. The significance of that ruling must not be underestimated as it presents opportunities for organisations whom so far have been prohibited from joining international

Photo credit: Crystal Lakatos



fraternities due to constitutional rules such as for example membership exclusivity. We must react on these opportunities. I thank the many people who supported the Australian fundraising towards the legal costs incurred by the plaintiff group and led by the Presidents of USCA, REAL CEPPA and WUSV. Please join me in expressing our utmost gratitude to these gentlemen for achieving such unprecedented results.

WGSDCA must connect the dots and prepare for the opportunities created and BOM has worked tirelessly on this for the last 3 months. WGSDCA may be founded in IGP dogsport but I believe we are so much more. Now is the time to show by action – not

words - that we want to and can follow the WUSV Statutes to the letter. The BOM has implemented the missing elements for full alignment with WUSV breeding and training programs, most recently demonstrated by the launch of the German HD-ED Portal Scheme with the DZG HD-ED Panel who are also commissioned by the WUSV, SV, VDH and other canine organisations. To be successful, each of us need to get our respective veterinarians to come onboard. Our Clubs must take the necessary steps to expand and offer activities such as Working with Danielle Strazzeri.

The SV-ZAP Scheme consist of the ZAP-W and ZAP-A. W=Wesen, A=Arbeit.

Consequently the Puppy test should be referred to as "ZAP-W" , Korungs etc. The BOM recognises this requires a collaborative Club effort and we will early in the new year call a meeting for our Executive Clubs to implement a strategic plan.

As year 2020 is coming to an end, I would like to thank all our clubs, members and volunteering trial officials and office bearers for the immeasurable time, perseverance and passion put into keeping the momentum going through 2020. Your efforts are reflected in the mere fact that more than 50 dogs entered the trial field in 2020, despite the fact of having less than 50% of trials compared to prior years and in light of training being fragmented, if not impossible, for the vast majority of the year. This is truly an outstanding achievement to be proud of.

On behalf of the BOM, I wish everybody a wonderful Summer and Happy New Year. In 2020 the dice was cast for the possibility of being the change we want to see. Let's roll up the sleeves, dig deep and demonstrate that the working dog aficionados of Australasia have deep roots and we will not go quietly into the night.



SANNE PEDERSEN | WGSDCA PRESIDENT



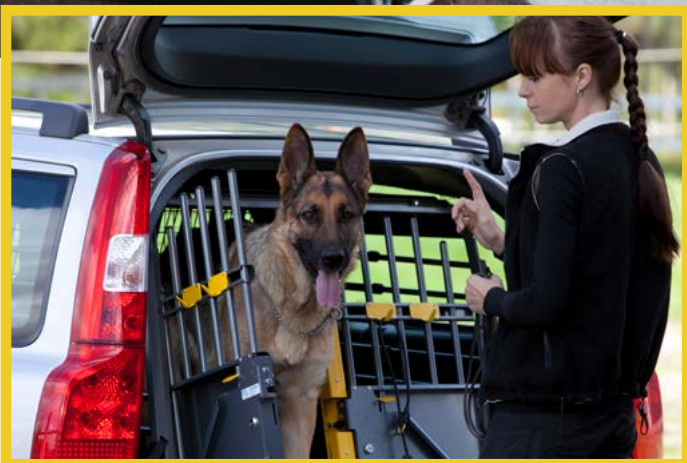
Mike Harper Willdogphotography

# BLACK HOUND

## VARIOCAGE

**mimSAFE**

[www.blackhound.com.au](http://www.blackhound.com.au)



# Special Update

**Update on operational functions and/or changes within the WGSDCA:**



**T**he **WGSDCA website** has been revised. It is now smartphone compatible and site navigation has been improved. Further, it has been decided to utilise the features that come with the WGSDCA webpage subscription as activities through the page are recorded in custom-made tables which enable easy identification of relevant records and these can be synced with the WGSDCA Google Drive account. As the WGSDCA continues to grow, it is blatantly obvious that an expectation of 8 volunteers (BOM, Admin of Records, DoH, ELO and Editors of WGSDCA Dogsport Magazine) to be responsible for an everexpanding workload is just not reasonable. We must share the workload, and all WGSDCA members must pro-actively assist with streamlining how the WGSDCA operates and make it more effective. Further, there has been some law changes to how non-profit organisations capture private information such as your name/address.

To that effect, we point your attention to the following:

1. **The WGSDCA Event Calendar:** This has been a feature on the WGSDCA website since 2017, but it has come to our attention that some Clubs are unaware. The Calendar gets updated when WGSDCA BOM approves events as per the Constitution need sanctioning. At this point of time, this includes trials (Constitutional Appendix D) and Helper seminars/examinations (Constitutional Appendix A). The website calendar *is the official publication of events as per FCI Utility Dog Rules*. To clarify, event publishing is not via various WGSDCA Club Facebook pages and/or the WGSDCA Facebook page. If the hosting Club provides a Flyer, then the WGSDCA Office will add it as an image to the entry in the Event Calendar. Should the hosting Club promote

their event on their own social media, then the WGSDCA will share this on the WGSDCA Facebook page if alerted to such fact. Please do not assume that the 3 people who have WGSDCA FB admin rights see Club announcements in a timely manner - or at all.

2. Changes to WGSDCA Form Submissions - moving forward, we will be transitioning from using the hardcopy forms to the following electronic submission forms (click on the blue headings below to view the forms). This change streamlines payments and ensures all necessary information for a valid Form submission is obtained (the form cannot be submitted unless all requested information is provided). Should you forget, then a request will be sent to you to resubmit a form using the electronic feature on the WGSDCA website:

- a. **Trial Notification Form:** no fee. An electronic signature is necessary from the person who submits the form (usually the club secretary). You use your computer mouse or touchpad to provide a signature.
- b. **Scorebook Application:** A\$25.00. This form can be submitted by any current individual WGSDCA member (no longer a requirement for the form to go through the club secretaries). To submit a form you must provide your WGSDCA membership number and the WGSDCA club you are a member of. Payment can be made via PayPal or credit card and funds will go straight to WGSDCA PayPal or bank account.

- c. **WGSDCA Sportspass Application:** A\$25.00. This form can be submitted by any current individual WGSDCA member (no longer a requirement for the form to go through the club secretaries). To submit a form you must provide your WGSDCA membership number and the WGSDCA club you are a member of. Payment be may via PayPal or credit card and funds will go straight to WGSDCA PayPal or bank account.
- d. **Trial Entry Form:** Clubs should direct members to the website to download the trial entry form to ensure the current form is used and the required information is provided.
- e. **WGSDCA Club Affiliation:** fee A\$580: Every year it is causing significant havoc for the WGSDCA secretary and treasurer to track payments and ensure that the correct information is being provided. As the individual WGSDCA membership subscription is between the WGSDCA and an individual, this has been segregated out as a separate feature. ie. as per other organisations, it is up to each of us to take responsibility for our own WGSDCA individual membership subscriptions (Point 'f' below). The WGSDCA clubs (or new clubs) will renew their WGSDCA Club affiliation using the online Club Affiliation form and upload the requested information. You must provide a list of all your members so that the WGSDCA office can check against this list when receiving Individual Membership Applications (point 'g' below). Payment is via PayPal or credit card. If your club doesn't have a PayPal account then this is straightforward to set up and it is free. Once you have an account you link the Club Bank account: [click here for more information.](#)

f. **WGSDCA individual membership:**

Fees are subject to type of membership subscription. The respective membership forms can be located on [www.wgsdca.org.au/membership](http://www.wgsdca.org.au/membership) Payment is via PayPal or credit card and will go straight to WGSDCA PayPal or bank account.

g. For both point 'e' and 'f': if an application is received from January - June of any given year, then the subscription fees are 50% as per our Constitution. The online form will however charge the full membership amount. If a membership application is submitted in the first half of a given year, then we will refund 50%.

h. **WGSDCA Social Membership:** fee A\$20.00:

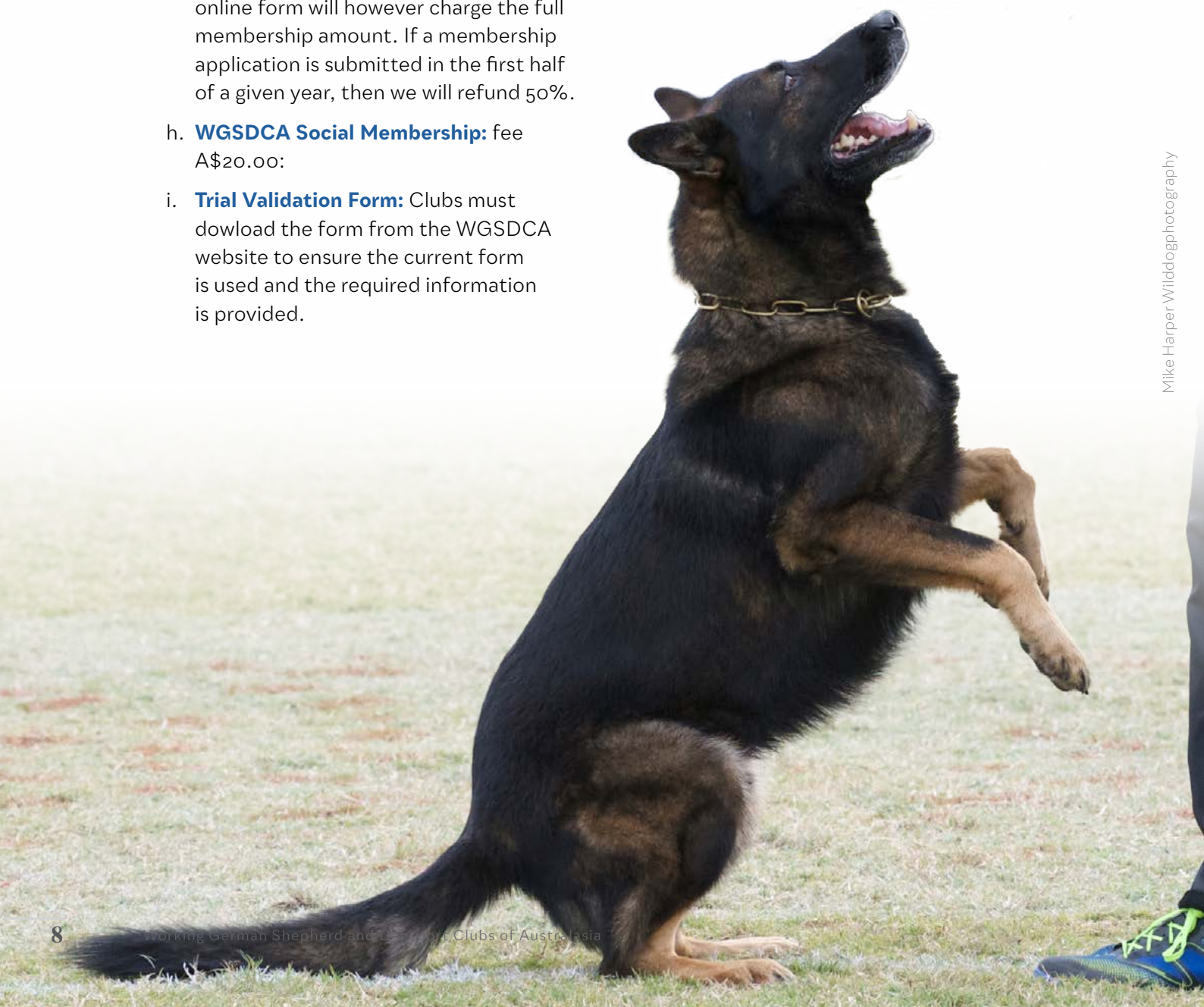
i. **Trial Validation Form:** Clubs must download the form from the WGSDCA website to ensure the current form is used and the required information is provided.

j. **The WGSDCA Magazine:** Anyone can submit material for publication consideration. Please contact our Editor, Karyn Worth for further information ([karynworth@dodo.com.au](mailto:karynworth@dodo.com.au)).

Lastly, we would be pleased to hear how you think the WGSDCA can further optimise its operation to the benefit of all of us involved.

On behalf of the WGSDCA Board of Management,

SANNE | WGSDCA PRESIDENT. 🐾





# New Changes as a Result of the 2020 WGSDCA Annual General Meeting

**O**n December 13, 2020 the WGSDCA Executive Clubs were unanimous in their support of several constitutional changes proposed by the WGSDCA Board of Management.

## **Unlocking the doors**

Some of the carried changes will further open the doors for working dog enthusiasts as well as German Shepherd Dog aficionados who share WGSDCA's vision – the preservation of the characteristic traits of a German Shepherd Dog which made this breed so popular in the first place: a physically healthy breed with an extraordinary sound temperament and a remarkable character of an intelligent dog who desires to do something. Whether that being as a sporting dog, service dog or family dog who will outrun the kids every time that soccer ball is kicked down the garden bed.

## **Want to compete at WGSDCA Club and National Events but under a non-WGSDCA Club Banner?**

### **Do it via a Kindred Club Membership**

Clubs affiliated with other working dog organisations may now apply to a WGSDCA Kindred Club Membership Subscription if such clubs are registered incorporations and hold a PLI\*. On approval of a Kindred Club Membership subscription (annual subscription fees apply), the members of such clubs may partake in any of WGSDCA's sanctioned events (trials, helper, tracklayer seminars, etc) on the conditions that such member subscribes to a WGSDCA Social

Membership (flat annual fee of A\$20), but they will enter a trial (club or national level) in the name of their Club. Please contact [secretary@wgsdca.org.au](mailto:secretary@wgsdca.org.au) for further details. (Previously, only individuals who were members of a WGSDCA Club Affiliate and individual full members of WGSDCA could enter WGSDCA trials. This rule placed a burden on the existing WGSDCA Club Affiliates and hence hindered our wish to see our trials getting bigger, better and bolder!)

## **Social Membership Subscription Privileges expanded**

The privileges of WGSDCA Social Membership Subscription were altered to accommodate the above change, but further expanded to grant Social Members of the WGSDCA access to the WGSDCA HD/ED Portal to Germany as well as other evaluation activities such as the 'Puppy Test' etc.

## **Let's work together to showcase as many of the IGP sporting dogs as possible**

On behalf of the WGSDCA Board of Management, I thank the Executive Clubs for supporting our wish to open up the doors to enable other Australian working dog clubs to enter the WGSDCA trial arena without losing their often multi-year affiliations with other IGP-like organisations in Australia.

## **Be Brave. Be You. Be Inspired. Inspire Others.**

Hope to see you all on the trial field. 🐾

\*Public liability insurance is designed for entities that interact with customers and/or members of the public. The insurance helps protect the entity against claims of personal injury or property damage that a third party suffers (or claims to have suffered) as a result of your club's operations.

## CLUB NEWS:

# Brisbane Sporting Dog Club

## Trial in the year of COVID

LEICA PITT

With a lot of excitement, we decided to go ahead with our trial on November 7th & 8th 2020. With everything that had gone on during the year we just thought we would do it and see how we go.

Things started out well with really good interest from people in Queensland and NSW wanting to enter our trial. We all held out hope that the borders would open and the trial would go smoothly but, unfortunately that was not to be the case.

We did however, still have really good interest in the trial from Queenslanders with 4 x IGP2s, 4 x BHs and 1 x TR1 entries. It was great to see members from Metro (both Brisbane and Rockhampton members) and Brisbane entering.

Our next challenge was organising a helper as our own trial helper Paul Andryc was not sure if he would have a clearance for his ankle to be the trial helper. So we

contacted John Daniel from Norwest Club and asked if he would contact Murry Atkin to see if he was available, but unfortunately he lived in one of the Sydney 'hot spots' and was not allowed to travel. We then heard that Cole Little a WGSDCA trial helper from New Zealand had





just relocated to NSW central coast and with the travel bubble between New Zealand and Australia we thought we might be able to use Cole. Cole said he was happy to do the trial but was unsure if he could as he had only just arrived in the country. We contacted the COVID hot line to check and yep you guessed it Queensland did not yet have a travel bubble with New Zealand. So we were starting to think that we would have to cancel the trial or have just a BH trial.

Just as we thought it was all over, Paul gets a clearance for his ankle and we are back in business!

The trial was a real success and a lot of fun. We were so happy for our members as 99% of all of the Brisbane members that competed passed. It was also great to see the Metro members passing as well. Over all it was a very successful trial.

Best BH went to our own Paul Andryc and Ragnar and High in Trial was our own Garry Pitt and Bronson IGP 2. 🐾



**CLUB NEWS:**

# Metro Dog'sport Club

*A year done differently!*



Mike Harper/Wilddogphotography

In what has been an unusual year for everyone, it has still been one that as a club we can be proud of. We managed to stay connected through sharing our training videos with each other, articles of interest and training discussions and although we couldn't all be together it still felt like we were!

**D**uring the year we held two trials, three helper workshops and a training day with four other clubs. Our August trial turned out to be one of the biggest trials we have ever held with 5 x IGP3, 2 x IGP2, 1 x IGP1, BH & TR1, not bad considering the challenges 2020 threw at us.

Congratulations to our members who this year at Metro and BSDC's trials were awarded 4xIGP3, 3xIGP2, 2xBH, TR1 and TR2 titles.

I also want to congratulate Liz and her dog Jezlahn Yandi for successfully passing a breed survey at the Queensland German Shepherd Dog Club Breed Survey in July. Great to see WGSDCA members entering their dogs into breed surveys as we know how important the health, conformation and workability of the GSD is.

This year we have welcomed Eden, Charlie, Cassidy, Yani, Simon, Madison and Felipe into the Metro membership. It is exciting to see such an enthusiast group of young dog trainers who are keen to learn all they can, and also get in and help out as much as they can.

Mike Harper/Wilddogphotography





Mike Harper Wilddogphotography

Thanks also goes to the rest of the membership who help train others, set-up and take-down of all the training equipment every week, work on the committee and the support shown by each others other through the highs and the lows of training and competing. We can't forget our helpers because without good training/trial helpers we wouldn't be where we are today.

In October this year our Metro member Glynis Hendricks held an Engagement and Precision workshop with ANKC and IGP members. The two day workshop was a success with everyone lining up for next year. It is so pleasing to see that dog trainers across disciplines want to get the best performances out of their dog through balanced and motivational methods.

As 2020 closes its doors and 2021 begins our members are having a well-deserved break until late January. When we return I'm sure everyone will be keen to get in and train hard for the year ahead! 🐾



Mike Harper wilddogphotography australia



Mike Harper wilddogphotography australia



## CLUB NEWS:

# Norwest Dogsport Club

The Norwest team has been very busy as usual with lots of training going on and trying to avoid the crazy heat that we have had in NSW for the past month or so.

**B**ecause of COVID-19, we have not been able to hold any trials due to the borders being closed, which is a shame as we have quite a few dogs that are ready to trial in BH and IGP titles.

In August, Norwest hosted a Helper Workshop run by John Daniel WGSACA Teacher Helper. We had quite a few of our own members and members from other clubs participate along with some keen helper newbies that are interested in doing club helper work. It is so vital to our sport that we have more Helpers in our clubs as without our Helper we don't have a sport, so we thank all the guys from Norwest showing an interest in learning helper work.

On the 19 October, Norwest Dog Sport Club member Paul Doyle and his dog *Von Zennith Jurgen Bosco* achieved his IGP 1 at the Working K9 Club (Schutzhund Australia), club trial under Judge Michael Kamphuis. It was a huge day for Paul as all 3 phases were on the one day!

It's really great to see members crossing over to attend other organisations trials to gain more trial experience, as this year Norwest Club could only host a trial in January and then



Coronavirus hit, so good on you Paul for giving it a go and passing the trial! Pauls scores were - **A:78 B:77 C:76**

Due to there being no IGP trials in NSW for the most part of this year, our club member Louise Bayliss entered the ANKC NSW State Titles, Novice Ring which was over a hot and long 3 days. Louise and her dog Rogue earned the Triple Qualifier Medallion for qualifying all 3 days and also the NSW State Titles Gold Medallion for the highest scoring Novice dog across the weekend. It is really great to see IGP competitors switch over to other dog sport obedience and come home with all the medals!

Our Norwest Dogsport Club Training Director, Michelle Daniel has also been busy, in running Motivational Obedience seminars for the ANKC Fraternity. I think we all agree that IGP obedience is 'second to none' and the 'art' of how IGP Obedience is taught through motivation can be a huge assistance to any Dogsport competitor. Michelle has had a huge interest and had fantastic feedback from people attending motivational obedience seminars and lessons, showing people

how much fun motivational obedience can be for their fury friends. It's great to see more IGP competitors and trainers flying the flag for Dogsport and to show how our (IGP) training can work for any breed of dog and for obedience type competition.

Norwest Dogsport Club has just gained two new additions to the club. We would like to welcome *Monelite Bliss* owned by Monika Kawecki and *Schutzshep Letalis* owned by Louise Bayliss.

We look forward to seeing these babies flourish in Dogsport!

Norwest members look forward to seeing you all on the trial field next year and hopefully without all the COVID-19 lockdowns and border closures! 🐾





**CLUB NEWS:**

# Sydney Dogsport Club

**See ya' 2020**

ROB LUKIC

Well, what a roller coaster of a year 2020 has turned out to be, from unparalleled bush fires to extensive flooding of the Hawkesbury and the COVID crises which saw normality turned upside down!

**W**hilst we had to cancel the hosting of the WGSDCA Nationals 2020 along with international guests and our August trial, we have much to be thankful for. Our thoughts are with our dog sports colleagues and member clubs who have in many ways suffered greater restrictions and impositions than those in NSW. We look forward to more certain times ahead.

SDSC was fortunate to have Reg Worth (Director of Judges) and Shane Asanuma host a helper seminar early this year, and we congratulate Shane for achieving his WGSDCA Teacher Helper status and Steve for achieving his WGSDCA Club Helper certification along with other participants Shane Timmins and Samantha Hendricks.

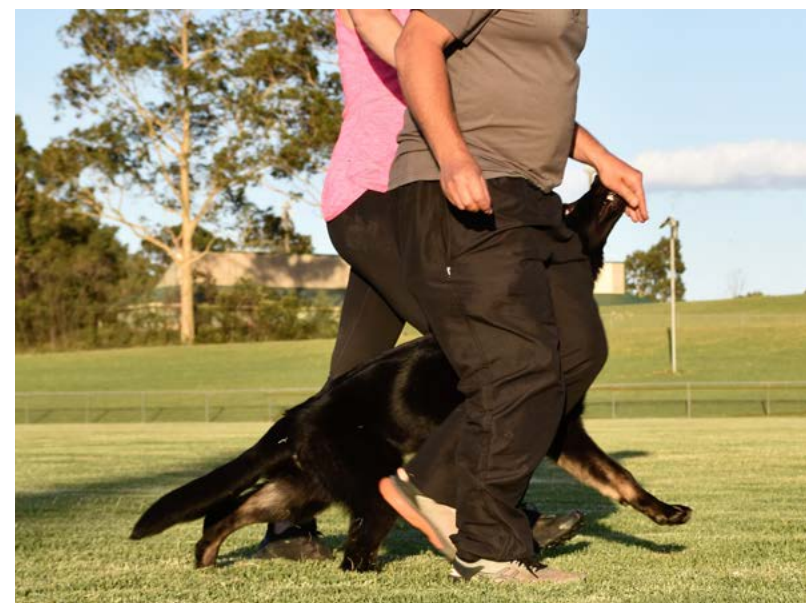
We welcome the birth of Heath, Helper Steve and Jamie's second boy and wish their growing family every success and happiness. On that cute note, a special welcome to our two Haveloc puppies, Rip and Raven, who are eager to show their new handlers Steve McDonalds and Dean Kannan a few tricks or two! We also welcome Anna Jones back into NSW after being stuck in Victoria for several months because of work. Hopefully we can move from zoom training to in person training soon!

Sanne managed to get to Queensland in late July for the Metro Dogsport Club trial and Bindi and Rixie got their IGP1 and IGP3, respectively, many congratulations! Shantelle Korber was ready to trial in Brisbane early November, but alas the border restrictions imposed in August were not lifted in time and it's just a rain check for now - Shantelle will be back as eager as ever with Ruby and Roman!

Speaking of being back, better than ever, save the date for WGSDCA nationals 2021 hosted by SDSC. We are already in the middle of planning it all!

*Happy New Year from SDSC. 🐾*







[www.cleardog.com.au](http://www.cleardog.com.au)

**All natural,  
high quality  
treats your  
dog will love!**

- » All natural dog treats
- » Sourced from Australia and New Zealand
- » Preservative and additive free
- » No added sugar



CLEAR Dog Treats offer one of the largest ranges of natural, preservative, sugar and colour free treats in Australia. All made in Australia and New Zealand from Australian and New Zealand ingredients.

# Interview with Dr Bernd Tellhelm

**(Med. Vet.ECVDI) HD-ED Expert**

Dr Bernd Tellhelm is a veterinary specialist in radiology and other imaging techniques such as CT as well as a veterinary specialist in surgery. He is a senior lecturer at the University of Gießen and was for more than 25 years the head of the Radiology Department at the Small Animal Clinic at the University of Gießen.

He is the current President of the German Association of Hip Dysplasia – *Gesellschaft zur Röntgendiagnostik genetisch beeinflusster Skeletterkrankungen bei Kleintieren* (GRSK) and long-time president of the *International Veterinary Radiology Association* (IVRA). He is also a member of the Board of the *International Elbow Working Group* (IEWG).

He is the leader of the DZG HD-ED Expert Panel used by VDH (the German all breed kennel Club) and the Federal Cynologique Internationale (FCI), and also a member of the Scientific Advisory Councils of SV (German Shepherd Breed Club) as well as the VDH.

He is an author of numerous peer-reviewed academic publications and co-authored and co-published the book *Röntgenuntersuchung in der Tierarztpraxis (X-ray Examination in Veterinary Practice)* ISBN: 9783830410409.



Thanks Dr Tellhelm for taking the time to provide further information about the Dysplasia Zentrum Gießen (DZG) and your long-term involvement with respect to genetically-determined skeletal disorders.

## **How long have you been involved in canine hip and elbow dysplasia?**

*I have since 1972 worked as a consultant and decisive expert on matters pertaining to canine hip and elbow dysplasia. I'm a consultant for several kennel clubs, such as but not limited to, Great Danes, Hunting Dogs, Retrievers and of course German Shepherds. I have been a SV consultant for elbow dysplasia for many years and HD consultant since 2012. I'm also a member of the Board of Management of the Society for the Encouragement of Cynologic Science, GKF.*

## **Can you tell us a little about the DZG and HD-ED Expert Team?**

*The DZG is located in Gießen and work closely with the Department of Small Animal Surgery, Justus-Liebig-University (JLU). The DZG is foremostly focused on Academic Research and we have been involved in research pertaining to the development of genetically influenced skeletal disorders for many years.*

*All the DZG HD-ED assessors are members of GRSK e.V. Besides our services pertaining to HD/ED assessments, we also offer assessments on transitional vertebrae, OCD, hemivertebra and other vertebral malformations and spondylosis.*

*The HD-ED Expert Panel includes Dr Nele Eley (Dipl. ECVDI, GRSK Board, member of the ECVDI Teleradiology Committtee, Partner of VetRad) and Dr Kerstin von Pückler (Dipl. ECVDI, GRSK Admission Committee, German Officer of IVRA and partner of VetRad) and myself. Both Drs. Eley and von Pückler are specialists in radiology (and other imaging techniques, CT, MRI, etc) and senior consultants and associates of the Department of Radiology and Department of Veterinary Medicine at Justus-Liebig-University.*

*The HD-ED Expert Panel was formerly established in 2018 but we have worked together for +15years at the Gießen University.*

*The HD-ED Panel members have all been awarded the title European Specialist in Veterinary Diagnostic Imaging by the European College of Veterinary Diagnostic Imaging (ECVDI). We are all members of the GRSK e.V and certified for evaluation of hip and elbow dysplasia. Further, we are certified as experts for HD-ED appeal cases.*

## **What are the objectives of the DZG?**

*The DZG funds external research projects via the Society for the Advancement of Cynological Research / GKF. Our aim is to support all pedigree dogs with a foremost focus on good animal health. Therefore, the DZG serves numerous club affiliates of the VDH as well as clubs that are not members of the VDH. Our mission is to provide pedigree breeding clubs with independent and continuous evaluation of medical diagnostic data as part of standardising screening procedures for genetically dependent skeletal disorders.*

*The diagnostic procedures relies mainly on x-rays (and CT) due to its low cost and high availability. However, there is an unmet need to standardise the procedures and training to get a homogeneous cohort of data that can assist the academic forum to further our understanding with respect to these genetically-determined skeletal disorders.*

## **For how long has the DZG HD-ED Expert Panel scored German Shepherd Dogs in Germany?**

*I was commissioned by the SV to score GSD elbows in 2004 and hips since 2011. A contract with DZG was implemented in 2019.*

## **Does the DZG HD-ED Expert Panel score GSD x-rays from other countries?**

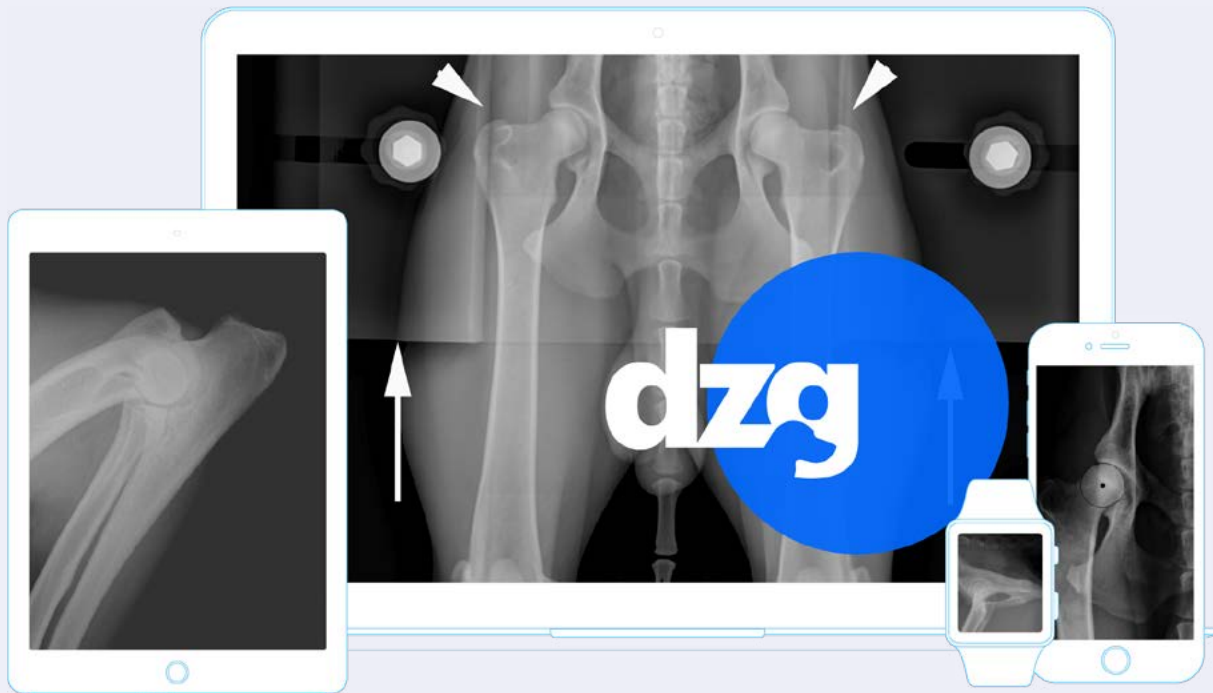
*Yes, we score GSD x-rays for WUSV member countries but also GSD Clubs not affiliated with the WUSV and/or FCI, for example Portugal and Spain - and now Australia.*

## **What is the purpose of a global database of GSD x-rays?**

*The initiative was instigated by the World Union of German Shepherd Dogs (WUSV) as part of their objective to implement a harmonised standard for GSD breeding worldwide - especially with regard to health. A global standard is imperative for the scientific studies pertaining to research focused on understanding how HD/ED scores may be used to predict a genetic risk. The challenge is that the various countries differ in how they score and x-ray image quality - as well as even tracking the identify of the dogs assigned to images.*

## **How many Foreign Veterinary Radiologist are already involved with the DZG HD-ED Expert Panel and their commissioned role within WUSV/SV?**

*There are about 70 veterinarians but the list is growing.*



**Can you describe the GSD HD-ED scoring process used by the DZG?**

*Typically I score the images. If there are questionable cases then that is addressed by the full Expert Panel Team. If an owner questions the outcome then the whole team is involved.*

**What happen if we have an Australian GSD owner who want to appeal a scoring?**

*We can set up an Appeal process for Australia which will be based on the uploaded images. The Appeal process will be no different to the standard Appeal Process utilised by the VDH/FCI and SV/WUSV. The Appeal Expert will be Prof. Dr S. Ohlerth, who is the Head of Department for Imaging at the VetSuisse University in Zürich.*

**How many German Shepherd dogs do you think you have scored - roughly?**

*Hmmmm - all together probably about 50,000.*

**What is the role of the DZG on the Scientific Advisory Councils for Pedigree Breeding Clubs through FCI/VDH, SV/WUSV or Clubs affiliated with none of these entities?**

*The HD-ED screening processes by various pedigree clubs are one of many means to inform selection of animals worthy for breeding. The processes are not always easy to understand for dog owners/breeders. Therefore, the DZG is commissioned as a third-party to provide care and advice to such clubs, their members and breeders. In general, the DZG offers advice to organisations such as the FCI and WUSV with respect to planning and implementation of activities that informs the genetically-determined health of an animal. Such advice is given in close collaboration with geneticists.*

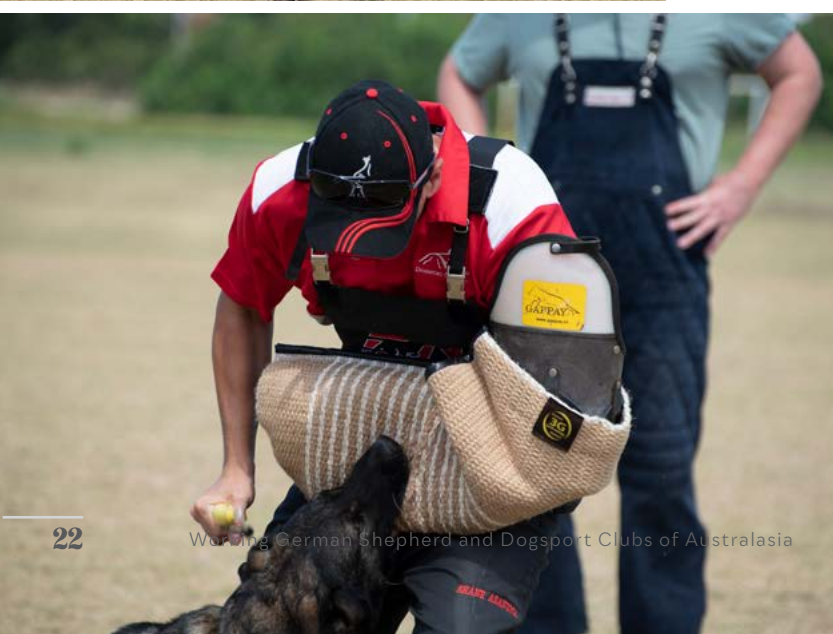
Dr Tellhelm, on behalf of Australia, thank you very much for a very informative interview. The WGSDCA hopes this information further drives a collaboration between Australian Veterinarians, GSD breeders and owners. 🐾



# WGSDCA Helper Workshop & Certification

– hosted by Metro Dog  
Sport Club inc.

On 5 December 2020, Metro Dogsport hosted its third and final WGSDCA Helper workshop and certification. December might not have been the best choice of months to hold a workshop as it was pretty dam hot however, that didn't stop the keen!





The workshop was run by Teacher Helper Shane Asanuma with assistance from WGSDCA Judge/Teacher Helper Reg Worth. The day started indoors with Shane talking to the participants about fitness levels, the routines, correct sleeve presentation and the appropriate pressure required to test the dog's temperament etc. Reg also spoke to the group about what a judge's expectations were of a helper in a trial.

The move from the air-conditioned classroom to the field was a difficult one I'm sure but everyone threw themselves into all the different exercises both with and without a dog. It was so pleasing to see everyone wanting to learn as much as they can and working to try and perfect it.

The day finished with Clint Wehmeier passing his helper certification. Clint has been a training helper for quite a few years now and it was a natural next step for him to become a trial helper for his club. Congratulations Clint on passing your exams!

Thank you also to Lauren, Maddison, Simon, Will, Eden and Mark who also participated in the workshop. Without helpers the sport would not be able to continue and we really do appreciate your enthusiasm for learning! 🐾

