

AUTUMN 2018

WGSDCA

MAGAZINE



WGSDCA BOM FROM THE DESK

We want to make sure you know what's happening in Dogsport in Australia and around the world. So we will be putting out a magazine each quarter to keep you informed. For this initial magazine we will cover a little more than 3 months!

**Help us name your magazine.
Please send us your suggestion to
the email below.**

If you would like to contribute to the magazine with stories and pictures from your club please email them to WGSDCAeditor@gmail.com.

Happy reading!

TRIALS/EVENTS/SEMINARS

- 2 – 4 March **Jany Bohm Seminar**
Sydney Dogsport Club
- 10 – 11 March **Jany Bohm Seminar**
Brisbane Sporting Dog Club
- 17 – 18 March **IPO Trial – Metro Dogsport Club**
*Brisbane, Queensland – SV Judge
Uwe Stople (Gmy)*
- 24 – 25 March **IPO trial – Sydney Dogsport Club – SV
Judge Herr Uwe Stople (Gmy)**
- 25 March **Seminar ZAP-A “Puppy test” – Sydney
Dogsport Club – SV Judge Herr Uwe Stople
(Gmy)**
- 1 – 3 June **WGSDCA IPO National Championship**
*– Sydney Dogsport Club – SV Judges
Herr Wilfred Tautz & Herr Uwe Stople*
- Western Australia** **IPO – Part C Workshop – WGSDCA**
*Director of Helpers Mr Balakrishnan and
WGSDCA Trial Helper & Apprentice Judge
Mr Lakatos.*
- 20 – 22 July
- Queensland**
- 26 – 28
- October

For more information visit WGSDCA website
www.wgsdca.org.au

CONTENTS

A Word from the President	3
Dogsport New Zealand – IPO Trial	4
Valley Dogsport Club – Inaugural trial	5
The Versatility of German Shepherd Dogs with IPO Heritage	6
Photographing the WUSV 2017 World IPO Championships	7

DOGSPORT: THE PRESERVATION OF THE WORKING DOG

MISSION STATEMENT

To maintain and improve the temperament and physical soundness of the German Shepherd dog in Australasia.

To promote responsible dog ownership to our members.

OUR VISION

To be a progressive dogsport organisation in partnership with the international dogsport community.



A WORD FROM THE PRESIDENT

Feb 2018

I am very excited to see the WGSDCA Magazine being re-ignited. I thank Karyn Worth and Lyn Ellerton for volunteering as the Editors. We hope to do 3-4 issues per year, so I encourage our members to submit material for review (info@wgsdca.org.au). We welcome briefs on club trials/activities, public relations or stories reflecting the versatile role of the German Shepherd Dog – whether that is as a sporting dog, companion dog or service dog.

In December 2017, the Board of Management established a task list for 2018 which focuses on promoting IPO dogsport in Australia with an end goal of national acceptance. To that effect, the hard efforts in January to get our Director of Judges, Mr. Reg Worth, to attend a SV National Judge Training course has come to fruition. Mr. Worth fulfils all the SV pre-requisites to attend the course in Germany during March. Could you all please join me in wishing Reg safe travel and the best of luck. Should he complete the course, then that would result in Reg becoming the first EVER fully accredited SV National IPO Judge in Australia. It goes without saying that this would be a huge milestone for the WGSDCA and of tremendous value for the development of breed specific working judges and dog/handlers.

On 10 February I attended the German Shepherd Dog Council of Australia (GSDCA) Annual General Meeting. You can find the agenda on the GSDCA website. I had the opportunity to meet the GSDCA Executive and several of the Club Presidents. The encounter was positive. The motions relating to an attempt to rescind the WHP 'working' schedules carried at the GSDCA SGM in July 2017 were withdrawn. The motions relating to the "Schutzhund" sections in the GSDCA Regulations Manual were carried (i.e. 2.11.1 rescinded). This means that the WGSDCA and the WUSV can interact directly in relation to SV Working Judge releases to Australia and sending team to the WUSV World Championship.

All in all, the first two months of 2018 have most certainly been productive and I think the WGSDCA is now appropriately recognised as a significant stakeholder on matters concerning IPO dogsport in Australia. On that note and on behalf of the WGSDCA BOM, I thank our members for their continuous dedication to the GSD, the WUSV WHP and maintenance of the highest standards of conduct when representing WGSDCA both on and off the field.

WGSDCA President

Sanne Pedersen



DOGSPORT NEW ZEALAND – IPO TRIAL

High View
IMAGES

Our club finished off the year with a trial on 16 December 2017 gaining new titles for our members. A good number of the trial entrants were first time competitors and it was great to see them out there, as we all know there is nothing like the experience of trialling, pass or fail!

Trial day ended up being quite a warm day in terms of NZ weather but the dogs handled it well and it was a credit to their training. Our Judge for the trial was Mr Reg Worth and the helper Mr Shane Asanuma from Australia. Little did Reg know at the time but he had to ride the twenty kilometres for the AD, no following in the car this time.

One of the things that really stood out was how well attended the trial was! There were a lot of faces there from years gone by and I don't think we have seen a trial that well supported for the last 6 or 7 years. You could see everyone went away from the trial very enthusiastic, which was a great sign.

The sport here is currently going through a rebuilding phase after a few lean years but, seeing everybody there supporting and competing shows that there is still good interest in IPO and hopefully it continues with the sport being revitalised.

Finally, a big thank you to all our club members and in-particular Karyn for the great job she did as trial Secretary and of course our photographers who took great photos of the trial. 🐾



PHOTOS: HIGHVIEW PHOTOGRAPHY

High View
IMAGES

VALLEY DOGSPORT CLUB – INAUGURAL TRIAL

Valley Dogsport Club held their first trial on 22 and 23 December 2017 in Gatton, Queensland.

What can you say about trial night.....well there was a thunder storm hanging round, and as our competitors (I was one of them) literally stepped up to the start line a black out occurred across the playing fields and surrounding facilities meaning we ran our entire pattern with less than a hint of daylight. Our judge Mr Reg Worth followed at close proximity so he could observe us doing the routine. At the end of the routine it had completely gone dark and by the time our long down was about complete the lights came on.

I guess one good thing that came from the lights going out was that I lost my nerves about the BH pattern, but rather turned my focus to not tripping over in the damned dark...not that anyone else would have been able to see that.

It was certainly a new experience for me, I think a first for our judge also, but I am pleased to add this experience to my bank and I've taken away a number of things to work on.

Thank you Reg for judging, and to everyone who came out to support us, especially Karyn, Anne and Andrea for getting up and meeting us for the AD at 4.30 am the next morning after a late night at the trial the night before. Thanks to Valley Dogsport and congratulations on running their first trial. 🐾





THE VERSATILITY OF GERMAN SHEPHERD DOGS WITH IPO HERITAGE...

A SHORT STORY ON GENERAL PURPOSE POLICE DOGS FROM KOVACS KENNELS

Crystal Lakatos

The working German Shepherd has long been considered one of the most versatile breeds worldwide.

The sport of IPO is effectively what maintains the ability of the breed to function in such a wide variety of roles, ensuring that working function, health and stability remain key qualities within the breed.

Kovacs Kennels have long drawn on the IPO background of the breed to place dogs into a variety of roles outside of IPO including policing, corrections, security, search and rescue and more recently adding a hearing assistance dog to this list.

We have had a solid number of success stories. Considering that our kennel was established in 2000, some of these dogs are now reaching the ends of their careers. Many of our earlier dogs in particular were placed in service roles following upbringing and development to approximately 12 months of age at our kennels. The following are two of our most recent stories that received media attention on Kovacs Dogs within the police.

First, up we'd like to pay tribute to WA PD Kovacs Geoffrey recently retired, and now sadly, passed on. Geoffrey, mostly based during his career in Bunbury, took part in 122 successful jobs during his 6 year career in which offenders were apprehended as a direct result

of his work. Geoffrey was much loved by his family, spending much of his off duty time at the beach and at home with his handlers young son.

On a more happy note, recently graduated NSW PD Kovacs Uno. Uno graduated on 5 January, and has already received acknowledgment for her work. 31 January, she was involved in the apprehension and arrest of four men involved in a home invasion and assault in Sydney's South West. Then on 4 February she received a mention for her involvement in multiple jobs the week prior. It's really great to see females also involved in police work.

Both stories, are evidence that German Shepherd dogs with IPO foundations can be moulded to suit any role with the right training, and indeed they are also well suited to companion roles as well-adjusted, stable, loyal and happy dogs. 🐾



PHOTOGRAPHING THE WUSV 2017 WORLD IPO CHAMPIONSHIPS

Mike Harper (Wild Dog Photography)
Photographing at the WUSV Holland.



The process begins usually about a year ahead of the event when you apply for accreditation. To grab cheap fares you need to book flights and accommodation at about the same time... so you just hope and pray you are going to be granted permission to photograph.

The pressure begins at the airport, my carry on camera bag weighs usually about 20 kilos. We have I am sure all witnessed the baggage handlers gently loading our bags onto the aircraft prior to departure, so I have no choice but to carry my precious camera gear with me. Some guys use pelican cases and check them in and just hope they arrive at the other end safe and sound but they are quite heavy before you start loading camera lenses etc and you end up paying excess baggage rates. I always wear a large pocketed coat even if travelling to warm climates so if the check in person does want to check my carry on weight I can load all the pockets with camera bodies and lenses and casually stroll onto the plane, happily greet the cabin crew and find my seat. Jane wears a similar jacket so if required she can load up her pockets as well. Once on the plane the pressure remains as I have to protect the bag from the doozies with their wheeled cabin bags who slam them into the overhead racks, or the friendly hostess who kindly offers to help me put the way over the weight limit of 7kg bag in the overhead locker.

So after arriving at our destination, accommodation, hire car sorted let the fun begin. Drive to the venue to check it out and collect accreditation pass, try to bluff the officials that I have had a double knee replacement last week and I really do need a carpark pass, inevitably the answer is No.

The events usually start quite early which means leaving your accommodation in the early morning darkness,

battling the morning traffic rush, the rain and of course driving on the wrong side of the road in a strange vehicle in a place you have never visited before. Arriving at the venue early to try and bluff my way into the carpark tell the gate man how nice you think his neck tattoo is, would he like some Vegemite and I could take a couple of photographs of him and he will appear on the cover of National Geographic next week!!! Luckily just by arriving early I have been allotted a parking spot in the official carpark after just a little bit of bribery.

Obviously the photographers do have the best seat in the house, but it comes with conditions most of the time reasonable, but at the WUSV in Holland last year we thought the area we were allowed to move about in was way too restricted and the guy who was the photographers supervisor was very strict about us remaining inside the allotted area, he must have been a traffic cop in another life, so there was a bit of jostling for position especially for the long attack catch, but we sorted ourselves out snapped a lot of images and had a lot of fun.

All that aside it is a great privilege to be so close to the action and to see some amazing dogs, handlers and helpers at work. A little rain can make it more exciting with the hope that the dog will bring the helper to his knees, or better still pinch the sleeve and parade around with it.

At the WUSV there were seven of us who were the serious snappers with the odd competitor and 'some ones mate' sometimes joining us making less space for us to move about in. The days are long and if its raining you stay wet all day, there are few breaks. When you arrive back at your accommodation you would love a beer and a meal but firstly you have to download and file your images and that could be thousands from at least two cameras.



PHOTOS: WILD DOG PHOTOGRAPHY

SOME OF THE ACTION



The other photographers were a good group to be around, after the initial checking each other out we got on very well together, hot drinks and snacks would be mysteriously obtained from some where, usually by one of the photographers who had a friend in the catering department the goodies would be smuggled past the security guys and out to us.

I've been fortunate enough to photograph dogs enjoying their sport at the Bundessieger, the WUSV, FMBB worlds and of course our own WGSDCA trials and Nationals.

Its great to see the handlers who have devoted hours and hours at training, early mornings and late nights performing at the highest level with their dogs. The smiles and tail wags as a dog successfully completes its tasks are wonderful to see. Some competitors have travelled thousands of kilometres to compete you hope they have a successful trial, sometimes they don't but even then there is usually a smile and shrug of the shoulders as if to say "next time". To most It really doesn't matter who wins as the experience of competing is prize enough.

We were a mixed bunch of photographers from Australia, USA, Germany, Holland and the Czech Republic but we all shared the one passion, to capture images of sport dogs having a lot of fun and competing at the highest level. 🐾



AUSSIE CONTINGENT IN THE STAND



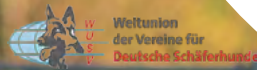
WGSDCA

IPO National Championship 2018



1-3 June, Sydney

SV Chief Judge Herr. Wilfried Tautz
SV Judge Herr. Uwe Stolpe



Proudly hosted by
Sydney DogSport Club

Save the Date



Competitor Entry Deadline

1 May
2018

Competitor Fees:

IPO V0, IPO1-3 \$50

OB1-3, TR1-3 \$40

Preliminary Schedule

May 31, 2018 (Thursday)

9-14.00 Field open for competitors

June 1, 2018 (Friday)

13.30-14 Competitor check-in

14.00 Handler Meeting

15-16.00 Helper Selection

16.00 OPENING CEREMONY

Including Competitor draw

16.30 Temperament test

June 2, 2018 (Saturday)

6-9am Tracking

10-16 Obedience, Character work

June 3, 2018 (Sunday)

6-9am Tracking

10-16 Obedience, Character work

Send your completed Trial Entry Form to: nats2018@wgsdca.org.au

Payment to:

Sydney DogSport Club

Commonwealth Bank, BSB 062 158, Acc 102 45 489



WGSDCA 2018 Nationals Merchandise

ORDER FORM

email completed form to: lyn.ellerton@gmail.com

Name

Address

Mobile (required for sending bill)

Orders to be picked up from Sydney Dogsport Club at the National. Postage can be arranged for extra charge.



Index Zip Up Hood by 'AS Colour' \$60 each

Featuring a heavy weight 350GSM to keep you warm on those cold nights.

- 350 GSM 80% Cotton, 20% Poly
- Shoestring cord, kangaroo pocket & metal zip
- Anti-pill fabric

SIZE	XXS	XS	S	M	L	XL	2XL	3XL
Half Chest (cm)	45	48	51	54	57	60	63	66
Length (cm)	66	68.5	71	73.5	76	78.5	78.5	83.5

Size	Qty



Men's Base Long Sleeve Cuff T Shirt by 'AS Colour' \$60 each

- 220 GSM 100% Carded cotton (marles are 15% polyester)
- Shoulder to shoulder tape
- Split detail at hem, drop at back
- Ribbing at neck
- Sleeve cuffs
- Fabric pre-shrunk to minimise shrinkage
- Double needle bottom hem and sleeve

SIZE	SML	MED	LRG	XL	2XL			
Half Chest (cm)	48	52	56	60	64			
Length (cm)	74	76	78	80	82			

Size	Qty



Sportage Mens Delta Combed Cotton Pique Polo \$45 each

Classic cut mens polo with sleeves on soft 100% combed cotton. Pique knit fabric. 230gm.

SIZE	XS	S	M	L	XL	2XL	3XL
Half Chest (cm)	49	52	54	57	60	62	65

Size	Qty



Sportage Women's Delta Combed Cotton Pique Polo \$45 each

Classic short sleeve polo with sleeves on soft 100% combed cotton. Pique knit fabric. 230gm.

SIZE	6	8	10	12	14	16	18
Half Chest (cm)	40	42.5	45	48	51	53.5	56

Size	Qty



2000 Gildan Mens Gildan Plus Size T Shirt 4XL & 5XL

\$40 each

Men's 6.1-ounce, 100% cotton (preshrunk) Double-needle sleeves and hem Taped neck and shoulders Ash is 99/1 cotton/poly. Sport Grey is 90/10 cotton/poly. Dark Heather, Safety Green and Safety Orange are 50/50 cotton/poly.

SIZE	4XL	5XL										Size	Qty
Chest	76	81											
Body Length	86	89											



Men's AS Colour Staple Regular Fit T Shirt

\$35 each

The Staple Tee is a mix of all of our favourite mens shirts blended into one super fine cotton masterpiece, try it once and it should become a staple in your wardrobe.

- 180 GSM 100% Cotton
- Shoulder to shoulder tape
- Fabric pre-shrunk to minimise shrinkage
- Double needle bottom hem and sleeve

SIZE	S	M	L	XL	2XL	3XL							



T10022 Digital Biz Collection Womens Ice Cotton Tee sz6 - sz24

\$35 each

- 100% Premium Combed Cotton: 65% Polyester, 35% Cotton 185 GSM
- Twin needle sleeve and body hem Ribbed elastane neck opening for stretch and shape recovery
- Side seams for reduced twisting and ease of alignment for printing
- Mobilon tape across shoulders for comfort and shape retention

SIZE	6	8	10	12	14	16	18	20	22	24
Chest	44	46	48	50	52.5	55	57.5	60	66.5	71

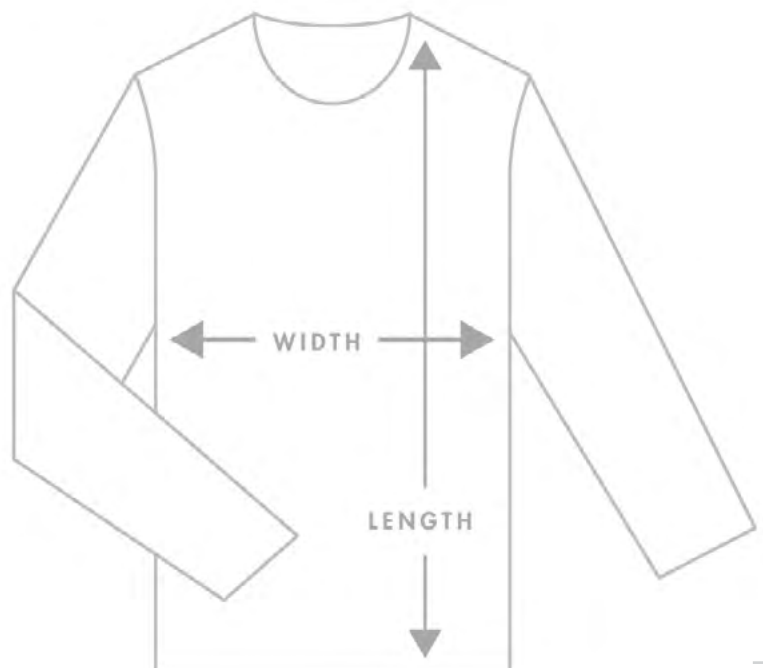
How We Measure

Getting The Perfect Fit

Step 1: Grab a T Shirt that fits you well

Step 2: Lay it on a table & measure it armpit to armpit on one side only

Step 3: Compare this to the sizes next to the required style for a perfect fit!





SCOREBOOKS, SPORTS PASSES AND FORMS

When filling out the forms for your score books, sports passes, membership and in particular trial validation forms it would be appreciated if the forms could be typed rather than hand written, where possible, to ensure accurate records are kept and scorebooks and sportpasses reflect the correct information. Also when scanning please make sure the scans are of good quality in black and white.

Please ensure payment forms accompany all payments so the money can be allocated to the correct person and item eg. Smith - scorebook.

INDIVIDUAL WGSDCA MEMBERSHIP

Whether your interest is breeding or training the German Shepherd Dog, or simply enjoying the company of people like you who love to spend time with their dogs, WGSDCA has something for you. Send us an email to learn more.

MEMBERSHIP APPLICATION

You can join WGSDCA through one of our Club Affiliates or directly. We have five categories of Individual Membership of the WGSDCA:

- Single Membership
- Dual Membership
- Youth Membership (free)
- Life member
- Dual Membership
- Social Membership

Members of WGSDCA have to renew their WGSDCA Individual Membership annually.

Send us an email for further information.

secretary@wgsdca.org.au